

SMITH

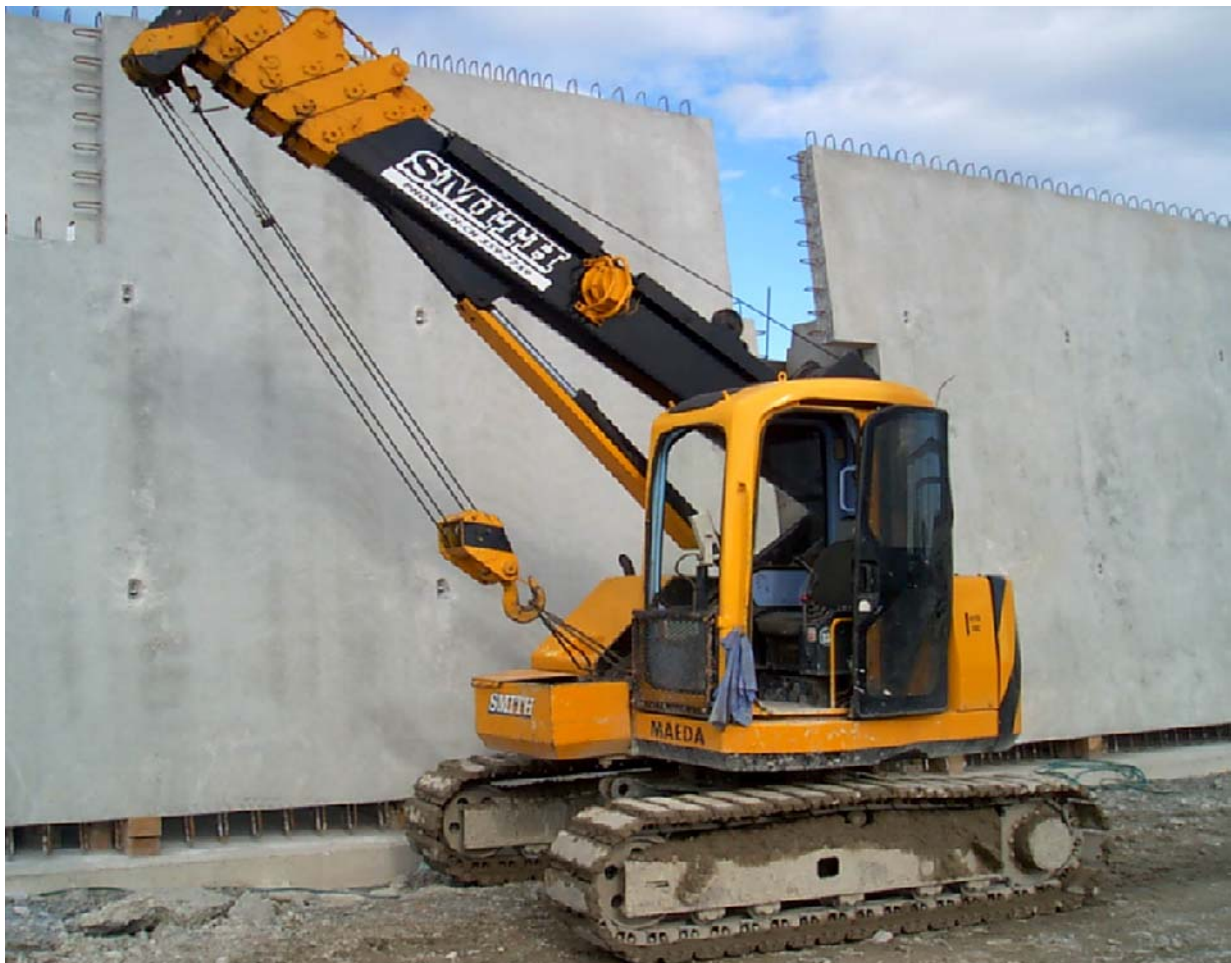
CRANE & CONSTRUCTION LTD



CC505 – 2

4.9T Telescopic Crawler Crane

Load Chart





CC505 – 2 4.9T Telescopic Crawler Crane

Main Boom Load Chart

Stationary Lifting

Radius (M)	Boom Length				
	4.56	7.31	10.06	12.81	15.56
2.00	4.90	4.90	2.60	1.90	
2.10	4.90	4.61	2.48	1.90	
2.50	3.72	3.67	2.10	1.90	1.30
2.70	3.31	3.31	1.95	1.90	1.30
3.00	2.84	2.87	1.75	1.71	1.30
3.15	2.64	2.68	1.66	1.62	1.30
3.45	2.32	2.36	1.51	1.47	1.22
3.50		2.31	1.49	1.45	1.20
4.00		1.90	1.28	1.24	1.08
4.50		1.59	1.12	1.08	0.98
5.00		1.34	0.98	0.95	0.88
5.50		1.14	0.87	0.83	0.79
6.00		0.97	0.77	0.74	0.71
6.20		0.97	0.74	0.71	0.68
6.50			0.69	0.66	0.64
7.00			0.62	0.59	0.57
7.50			0.56	0.53	0.51
8.00			0.50	0.47	0.46
8.50			0.45	0.42	0.40
8.95			0.42	0.38	0.36
9.00				0.38	0.36
9.50				0.34	0.31
10.00				0.31	0.27
10.50				0.27	0.23
11.00				0.26	0.19
11.50				0.26	0.16
11.70				0.26	0.15
12.00					0.15
12.50					0.15
13.00					0.15
14.00					0.15
14.45					0.15



CC505 – 2 4.9T Telescopic Crawler Crane Main Boom Load Chart

Pick and Carry Ratings

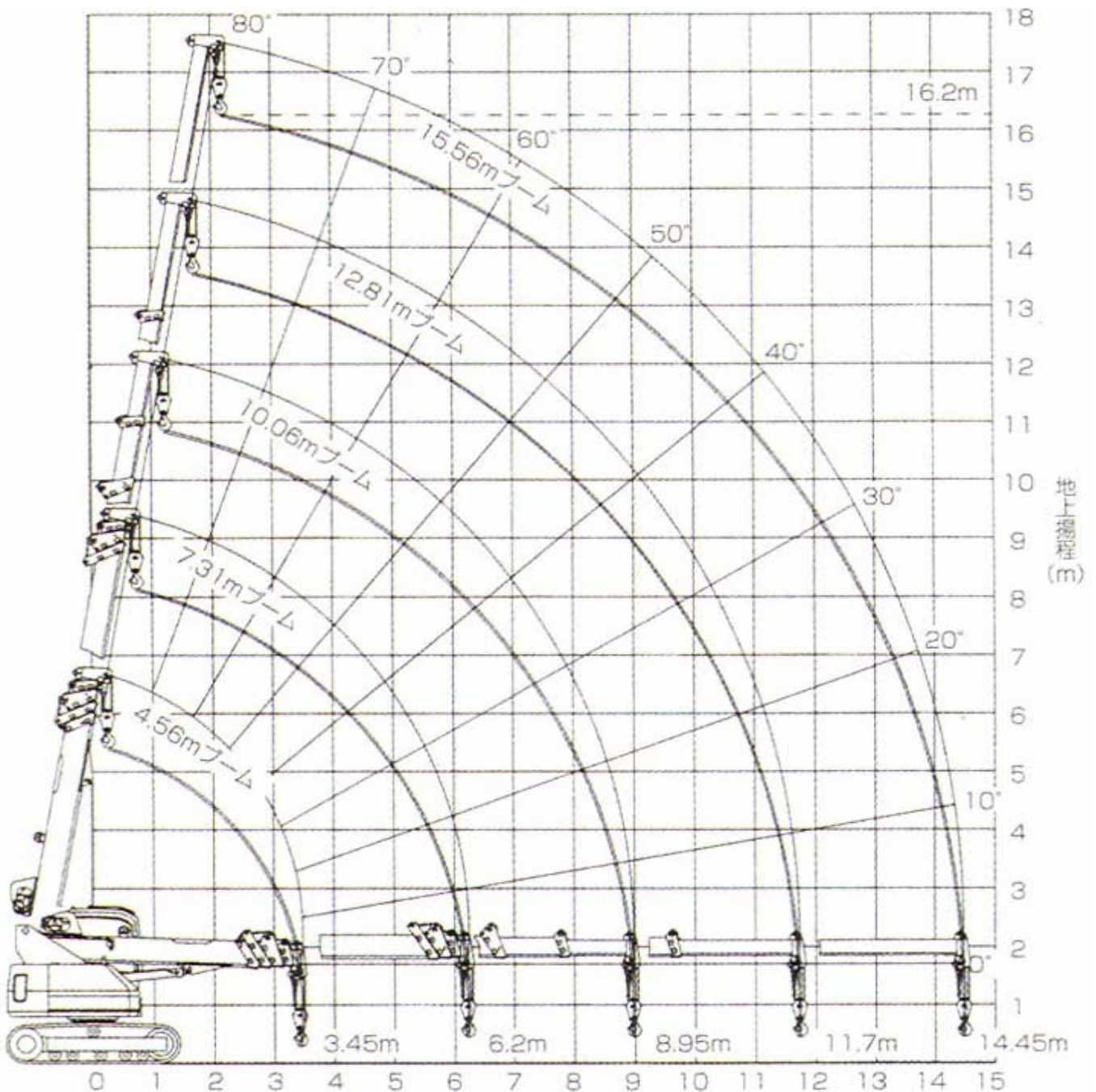
Radius (M)	Boom Length				
	4.56	7.31	10.06	12.81	15.56
2.00	2.00	2.00	1.40	Not Permitted	Not Permitted
2.10	2.00	2.00	1.36		
2.50	2.00	2.00	1.14		
2.70	1.80	1.81	1.05		
3.00	1.55	1.56	0.94		
3.15	1.44	1.45	0.90		
3.45	1.26	1.27	0.81		
3.50		1.24	0.80		
4.00		1.01	0.69		
4.50		0.83	0.61		
5.00		0.69	0.54		
5.50		0.58	0.49		
6.00		0.48	0.44		
6.20		0.45	0.43		
6.50			0.40		
7.00			0.37		
7.50			0.34		
8.00					
8.50					
8.95					
9.00					
9.50					
10.00					
10.50					
11.00					
11.50					
11.70					
12.00					
12.50					
13.00					
14.00					
14.45					



CC505 – 2

4.9T Telescopic Crawler Crane

Range Diagram





CC505 – 2

4.9T Telescopic Crawler Crane

Specifications

Performance

Max Weight x Radius	4.9t x 2.1m
Max Radius	14.45m
Max Height of Lift	16.2m
Speed	2.9km/h

Roll Up

Rope	6x Fi (29) IWRC : 10mm x 90m - 6.89t
How many Ropes	4
Hook Speed	15m/min
Rope Speed	60m/min
Drum Force	4

Stretch

Boom	4.56 - 15.56m
Stages of Boom	5
Stretch	2 cylinders plus wirerope simultaneous together
Boom Stretch/ Stroke	11.0m
Stretch Time	25secs

Boom

Boom Angle	-2 to 80deg
Angle Time	13 secs

Swing/ Slew

Speed	2.1min (2.1rpm)
-------	-----------------

Machine

Total Length	4.977m
Total Height	2.700m
Total Width	2.320m
Swing Radius	1.400m
Track Length	2.868m
Centre of Machine to centre of Hook	3.427m
Total Weight	8.800ton